

SeraPreserve

Formalin Free – Tissue Fixative Concentrate



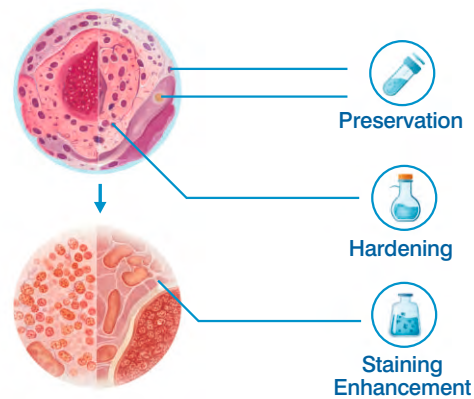
SeraPreserve is an innovative tissue fixative concentrate crafted for laboratories in histology, cytology, and pathology. It excels in preserving biological tissue samples, ensuring optimal cellular integrity and structural clarity essential for precise microscopic analysis.

Tissue Fixative Essentials

- **Preservation:** Prevents tissue decomposition by stabilizing proteins and cellular structures.
- **Hardening:** Solidifies tissue, facilitating easier slicing for microscopic analysis.
- **Staining Enhancement:** Improves tissue staining for clearer visualization of cellular details.

Why SeraPreserve?

With **SeraPreserve**, researchers and clinicians gain a safe, formalin-free solution that enhances sample quality. Its advanced formulation offers dependable preservation, making it an ideal choice for those committed to accuracy and safety in tissue analysis.



SRL's SeraPreserve:

Concentration	Product Code	Available Pack Size
10×	15776	5 Ltr
25×	40148	5 Ltr
50×	21569	5 Ltr

SeraPreserve Highlights

- **Formalin-Free Safety:** Non-carcinogenic formulation with no formalin or formaldehyde, ensuring a safer lab environment.
- **Optimal Preservation:** Glycols and pH-adjusted organic intermediates maintain cellular integrity, prevent tissue damage, and support pristine storage.
- **Reliable Stability:** Delivers consistent results at neutral pH and room temperature.
- **Versatile Application:** Ideal for IHC, histopathology, diagnostics, forensics, biobanking, and research.
- **Extended Storage & Easy Handling:** Supports easy sample handling and long-term preservation.
- **Efficiency Boost:** Improves tissue fixation quality, saving time and enhancing preservation across histological technique.

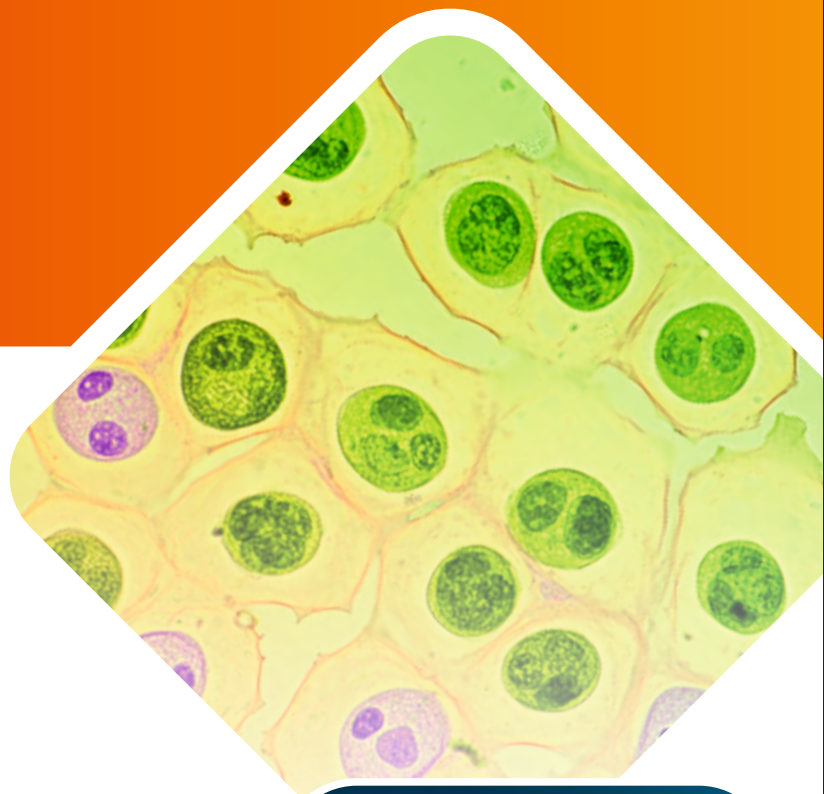
Key Applications

- **Histology & Pathology:** Widely used in hospitals and research labs to prepare tissue samples for disease diagnosis.
- **Immunohistochemistry:** Preserves antigens for precise antibody binding, ensuring accurate results.
- **Cytology:** Ideal for smear preparations, supporting detailed cellular analysis.

Transform Your Tissue Preservation
with **SeraPreserve**



Please contact:



SRL[®] **SISCO**
RESEARCH
LABORATORIES
PVT. LTD.

www.srlchem.com